

Upcoming Dates

NOVEMBER

Tues 1st
Melbourne Cup
NO SCHOOL

Fri 4th
Yr 7-8 GTAC Science Ex-
cursion

Mon 7th-9th
VCAL Camp

Wed 9th-11th
Yr 8 Positive Start Camp

Thurs 17th
P-2 Sleepover

CONTACT

Web eastlodd12.vic.edu.au/

Email east.loddon.p12@education.vic.gov.au

Phone 5436 8300

Fax 5436 8321

Blog <http://stevenleed.edublogs.org/>

COLLEGE COUNCILLORS

Richard Hicks, Darren Welsh,
Nathan Twigg, Dustin Pascoe,
Steve Leed, Scott Wilkinson, Sa-
rah Byrne, Nicole Hocking, Natalie
Rose, Lynda Cartwright, Dean
Young, Kia Hooke, Sharon Lister,
Alicia Hay and Brodie Welsh.



Respect
Responsibility
Resilience
Relationships

From the Principal

Thanks For Your Understanding and Patience

I would like to extend a huge thankyou to all within our college community for the efforts, understanding and responsiveness shown during our recent weather event. I understand that many within the community suffered the effects of flooding in or around their property and the stories of neighbours and friends helping each other out is once again testament to the terrific community we have.

On the school front, I would like to thank all families for their understanding of the situation that we found ourselves in at the college. As a Government school, we must act on the advice of the Department of Education, as well as emergency services. When roads are officially closed, we must not travel on them regardless of how safe we 'think' that they are. Likewise, our bus operators are also answerable to organisations such as Public Transport Victoria and emergency services. We at the college thoroughly appreciate the level of constant communication had between Loddon Transit and ourselves, and we thoroughly appreciate the preparedness of both our bus operators to run modified bus services the past couple of days. Loddon Transit will again check all bus routes on Monday in order to see if any routes can be extended. I will send out a Compass newsfeed later Monday to confirm any changes.

On a staffing front, we still do not have all staff able to physically get to school due to flood conditions around their residences, however the huge majority of staff have now been able to return. We will continue to provide the best possible education to all that we can in these circumstances and

hope to have all students back at the college asap.

No Mid-Term Progress Reports

With the recent closure of the college for almost 2 weeks, staff will not provide mid-term progress reports as they generally would. We have our fingers firmly crossed, that we have no further disruptions to on-site learning for the remainder of 2022.

Debutante Ball in 2023

Questions are being asked in regards to plans for the next debutante ball and I would like to clarify that an East Loddon deb ball will be going ahead at the end of term 1 2023. Possible numbers in the deb set are looking to be quite high and the debutante ball will cater for East Loddon P-12 College 2023 year 10 and 11 students. Students are encouraged to provide their names to the college office if they are interested in being part of the deb set and further details will be forwarded as they come to hand. Please make contact with the college office if you have any further questions at this stage.

We ask that all expressions of interest be submitted before the 1st of December.

VCE Students—Alternative Study Arrangements

A special thankyou is extended to all associated with the Serpentine Recreation Reserve for allowing our VCE students and staff to access the facilities in order to run revision sessions during our recent school closure. This was very much appreciated by staff, students and their families.

I hope that everyone has a great weekend!

Steve Leed—College Principal

Bush Tucker garden

East Loddon has recently been successful with an application for a 2022 Woolworths Junior Landcare Grant for our 'Bush Tucker garden' project!

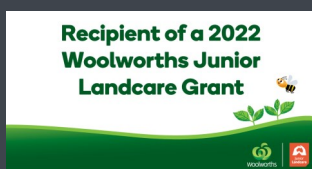
Mrs Hocking and the Year 5&6 students have used the grant to purchase three new wicking garden beds and a variety of edible native plants to grow in them, and have been busy getting everything set up. A huge thanks to Michael Hocking for his help with setting up the garden beds too.



Once the plants are established, P-4 Agriculture classes will also be able to visit the gardens to learn more about local 'bush tucker' and water saving techniques.

We are one of 1054 primary schools and early learning centres throughout Australia receiving a Woolworths Junior Landcare grant to help grow our next generation of environmental champions.

Click on the [Woolworths Junior Landcare Grant map](#) to read about our project and others.



Assistant Principal's news



Above: Our year 12s just before their Further Maths exam today.

Right : Just after the maths exam! Actually, just before their English exam.



It's been a pretty exceptional couple of years, that is for sure. I'm not going to go on about all that has happened, but I will comment on how much I admire this community and particularly its children. With all the things that happen, time after time our kids come back to school and they are eager and excited to learn and sometimes it feels as if not much has occurred at all. I have heard so many tales from young and old students in the last two days, that reinforce how resilient our kids are. I am also aware that sometimes this is a thin veneer. If you feel your child needs to talk to one of us or our wellbeing team, please contact the college and we will arrange this.

How about our year 12's! Hats off to them. If you could get a more disrupted couple of years, I'd like to know how. Please congratulate these fine role models who have pressed on in the most trying of circumstances. If you see Sarah Krahe, please thank her for the enormous amount of work that she does in the back-

ground for these students. She has had a hotline to the VCAA in the last 2 weeks to ensure we were allowed to hold exams on site. It's her work that makes smooth sailing for all of us. All this too, whilst protecting her own property. She literally took a canoe home to ensure she didn't get caught out!

It was so good to get some buses back on the road on Thursday. We were limited by which roads were officially open as buses can not use any closed roads. This is regardless of whether we think the roads are safe or not. I know this has been frustrating staff and no doubt parents even more so, but we are bound by these restrictions. Hopefully all buses will be able to run closer to their usual routes next week.

Next Tuesday is Melbourne Cup Loddon Shire Public holiday. This is a student free day.

Wilko.

Sub-School Updates

Junior

We're back!

How great is it to be back at school again? It has been so nice to see everyone back at school! Unfortunately, our excursion to Pepper Green farms has been postponed, but we are hoping to reschedule this for later in the term.

A big thank you to all the families for the last two weeks. It was great to hear kids on the phones, have online chats and regular email contact to keep in touch! Check out some of the activities the P-4's got up to.



Middle

Thank you to all students and parents for their work during the school closures. It has been great to have so many students back at school yesterday and today.

Year 8 Camp: The Summit Adventure Park will be from 9th –11th November. Information for consent has been given in hard copy form and sent in a Compass News-feed. Please make sure the online consent and medical forms are completed ASAP. The departure time will be 7.30am and return at 5pm.

Year 8 Graduation will be held on December 8th. More details to be shared soon.

Math Pathways: Well done to the following students on their last test results! Logan G (500%), Anthony G (433%), Colin M (367%), Addy M (300%), Riley W (300%), Lexi W (300%), Will H (200%), Indi S (200%), Ella B (233%), Jake S (233%), Harrison C (200%), Alex L (200%), Matilda S (200%), Jeremy W (200%), Archer K (333%), and Caitlin Ralphs (300%).

Senior

VCE Exams have started: Floods, road closures and no buses couldn't stop our Year 12 VCE classes from catching up to revise for their final year exams. For those students that could safely travel to Serpentine, the Rec Reserve kindly donated the space for students and staff to study and work together. We are certainly fortunate to have a committed group of students and staff to make this happen. Their exams commenced on Wednesday with English being the first one. Pictured are students and with Mrs McDiven and Mrs Fleming after the English exam.



Year 12 last day celebrations & Valedictory Dinner: Morning tea for parents/guardians Friday 18th Nov at 10:50-11:20am (please bring a plate to share), with celebrations continuing at the East Loddon Woolshed from 6pm-10pm. Please pay by Wednesday Nov 2nd.

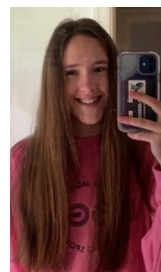
I love water, but this is getting a bit too much. If students are **missing classes due to road closures** I encourage them to contact their subject teachers via email for class work.

Expression of interest - regarding an excursion to **ACU and Fed Uni in Ballarat** on Monday 28th of November. Students will find out about potential courses, accommodation and more please let myself or Angela know by Nov 2nd.



SO IMPRESSED: Keira and Montana have had recent significant hair cuts. Both students were

modest about this, after some prompting as to why, they explained they had very kindly donated their hair to charity; The Hair with Heart, Variety the Children's Charity.



What an impressive act of kindness!!!

AROUND ELP SPORTS

Loddon Mallee Athletics

Results:

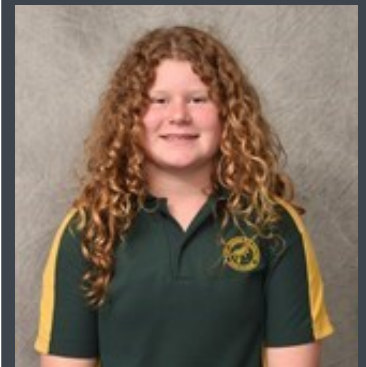
Angus A—1500m—1st Place



Tahlia B—Hurdles—1st Place



Teagan V—Shot-put—6th Place



Penny B—1500m—3rd Place



Great Southern Bioblitz 2022

Become a citizen scientist and participate in the biggest bioblitz across the southern hemisphere!

The [Great Southern Bioblitz](#) is an international event that aims to capture the immense biodiversity throughout the Southern Hemisphere during spring with hundreds of projects registered across Australia, Africa, South America, and the Pacific. It is a fantastic opportunity to get outside, connect to a global community of citizen scientists, and collect research-grade observations of the amazing species in our patch.

The North Central Catchment Management Authority (NCCMA) is participating in Great Southern Bioblitz 2022 and by doing so, they hope to gather important information to help researchers and the wider community understand the health of our catchment.

To contribute to this year's event, all you need to do is download the [iNaturalist](#) application to your handheld device or make an account on your computer and log your observations between October 28 and 31, 2022.

To add to the NCCMA count follow them at [nccma_citizenscience](#) and join their project <https://inaturalist.ala.org.au/projects/great-southern-bioblitz-2022-north-central-cma>

Resources to assist those affected by floods

In addition to the links sent out previously, there are additional resources related to the current floods which you may wish to access and/or share with your school communities if appropriate.

[Flood Event 2022 - Supports and Resources for Schools](#)

[Flood Event 2022 – Support for Children, Students and Families.](#)

The [Mental Health Menu](#) also includes programs targeted at [Disaster, Grief and Loss](#):

[Journey of Hope: School-Based Psychosocial Support](#)

[Stormbirds - growing from natural disasters](#)

Canteen

2022 OCTOBER	
Fri 28th	Miranda Smith Bec Cullen
Mon 31st	Karolyn Campbell
Tues 1st	Melb Cup No School
Wed 2nd	Nicky Lawry Brian Duffy
Thurs 3rd	Sue Pickles
Fri 4th	Sue Pickles
Mon 7th	Rachel Hay Michaela Shrimpton
Tues 8th	Sue Pickles
Wed 9th	Karen Pascoe Anna Osborne
Thurs 10th	Sue Pickles
Fri 11th	Wendy Murphy Deb Smith